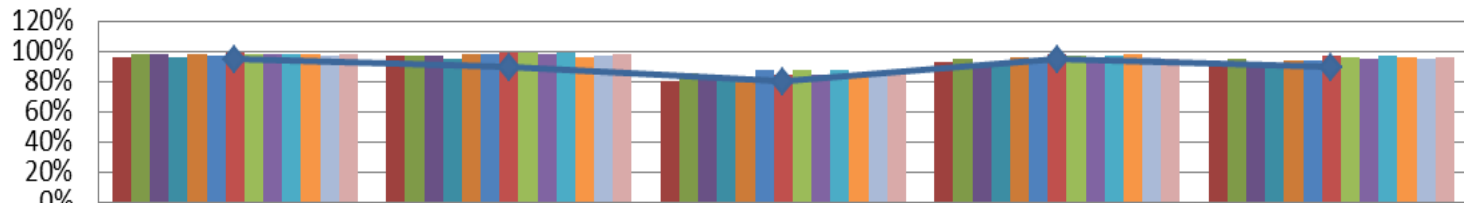




June 2017 Data Report

Brevard C.A.R.E.S. Data	June 2016	July 2016	August 2016	September 2016	October 2016	November 2016	December 2016	January 2017	February 2017	March 2017	April 2017	May 2017	June 2017
Total Number of Children Served by the Agency	1776	1489	1380	1020	857	806	771	768	797	760	849	889	864
Total Number of Families Served by the Agency	824	675	618	450	376	353	341	346	358	347	371	390	381

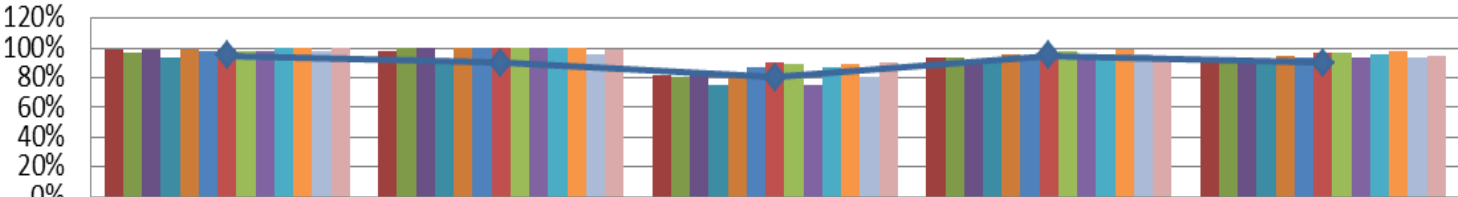
CARES Outcomes 2016-2017



	Safety Outcome	Wraparound Outcome	Natural Supports Outcome	Quality Assurance Outcome	Overall Outcome
June 2016	96%	97%	81%	93%	93%
July 2016	98%	98%	86%	96%	95%
August 2016	99%	97%	84%	91%	93%
September 2016	96%	95%	82%	93%	92%
October 2016	99%	98%	79%	96%	94%
November 2016	97%	99%	88%	94%	94%
December 2016	100%	100%	85%	98%	97%
January 2017	99%	100%	88%	97%	96%
February	98%	99%	85%	96%	95%
March 2017	99%	100%	88%	97%	97%
April 2017	99%	96%	86%	98%	96%
May 2017	97%	97%	85%	96%	95%
June 2017	99%	99%	88%	95%	96%
◆ Target	95%	90%	80%	95%	90%

Prevention Data	June 2016	July 2016	August 2016	September 2016	October 2016	November 2016	December 2016	January 2017	February 2017	March 2017	April 2017	May 2017	June 2017
Number of new Prevention cases	24	22	28	20	21	19	13	12	27	41	36	32	33
Number of new Prevention children	71	36	78	43	51	43	30	30	62	108	112	81	79
Number of Children Served in Prevention	1411	1135	1057	692	503	451	432	425	447	403	482	423	514
Number of Families Served in Prevention	633	491	446	280	194	173	166	166	175	156	180	199	200
DCF/Case Management Referrals	0	20	26	15	14	15	17	8	27	37	35	33	34
Self/Community/211 Referrals	0	1	2	3	7	5	3	5	3	3	3	1	4
Case Closure Reasons	June 2016	July 2016	August 2016	September 2016	October 2016	November 2016	December 2016	January 2017	February 2017	March 2017	April 2017	May 2017	June 2017
Total number of FSFN closures	145	64	170	100	38	22	15	16	52	11	16	26	13
Case Supervision Completed/ Outcomes Achieved	20	3	12	7	6	5	1	4	11	1	5	6	1
Service Provision Completed	53	25	55	46	16	8	5	9	26	5	4	10	4
Family Requests Services Close	4	0	8	4	1	0	2	0	0	0	0	0	0
Service Refused by Family/ no legal grounds	16	8	32	5	4	2	3	1	2	0	1	1	2
Other	21	12	27	27	1	3	1	2	4	5	3	1	2
Family Whereabout Unknown/ Reasonable Efforts	31	16	36	11	10	4	3	0	9	0	3	8	4
Caseload Data	June 2016	July 2016	August 2016	September 2016	October 2016	November 2016	December 2016	January 2017	February 2017	March 2017	April 2017	May 2017	June 2017
Monthly Average Per Care Coordinator (# of Families)	70	55	55	42	33	32	32	28	34	26	30	35	35
Monthly Average Per Family Partner (# of Families)	57	72	58	36	14	4	8	4	4	9	14	12	12
Average length of Participation	162	177	161	164	147	159	177	157	162	117	114	113	124
Percent of Families with a Transition Plan		75%	75%	N/A	100%	100%	100%	75%	100%	100%	100%	71%	100%

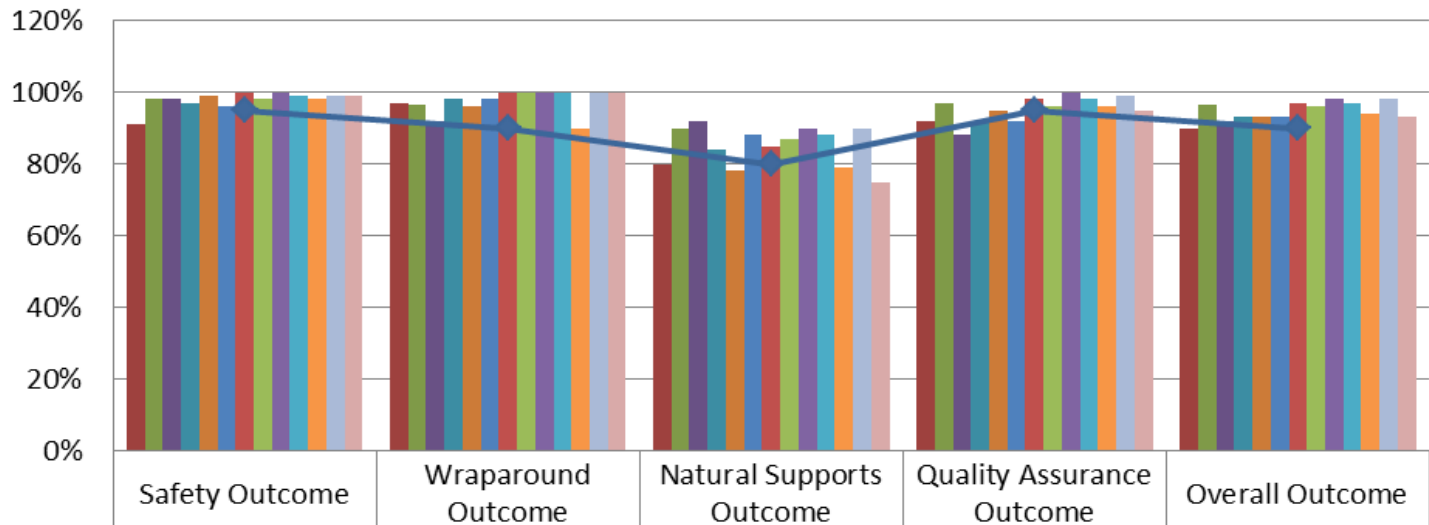
Prevention Outcomes 2016-2017



	Safety Outcome	Wraparound Outcome	Natural Supports Outcome	Quality Assurance Outcome	Overall Outcome
June 2016	99%	98%	82%	94%	94%
July 2016	97%	100%	81%	93%	93%
August 2016	99%	100%	82%	90%	92%
September 2016	94%	90%	75%	91%	89%
October 2016	99%	100%	80%	96%	95%
November 2016	98%	100%	87%	94%	94%
December 2016	99%	100%	90%	97%	97%
January 2017	98%	100%	89%	98%	97%
February 2017	98%	100%	75%	96%	94%
March 2017	100%	100%	87%	96%	96%
April 2017	100%	100%	89%	99%	98%
May 2017	98%	96%	80%	96%	94%
June 2017	100%	99%	90%	92%	95%
Target	95%	90%	80%	95%	90%

Child Welfare Team Data	June 2016	July 2016	August 2016	September 2016	October 2016	November 2016	December 2016	January 2017	February 2017	March 2017	April 2017	May 2017	June 2017
Number of new NJHS cases	18	15	13	3	11	11	9	15	11	22	6	14	14
Number of new NJHS children	40	25	24	7	26	28	21	26	18	41	19	33	32
Number of Families Served in Non Judicial In Home Services	101	102	92	82	78	80	71	76	76	92	87	88	86
Number of Children Served in Non Judicial In Home Services	220	228	209	187	177	182	155	161	154	185	189	194	194
Case Closure Reasons	June 2016	July 2016	August 2016	September 2016	October 2016	November 2016	December 2016	January 2017	February 2017	March 2017	April 2017	May 2017	June 2017
Total number of FSN closures	9	9	8	6	1	10	3	6	1	4	8	3	8
Case Supervision Completed/ Outcomes Achieved	7	6	5	3	0	5	0	6	1	3	2	3	1
Service Provision Completed	2	0	2	1	1	3	1	0	0		1	0	2
Family Requests Services Close	0	0	0	2	0	1	2	0	0	1	4	0	2
Other	0	3	1	0	0	1	0	0	0		1	0	3
Caseload Data	June 2016	July 2016	August 2016	September 2016	October 2016	November 2016	December 2016	January 2017	February 2017	March 2017	April 2017	May 2017	June 2017
Monthly Average of Families Per Care Coordinator	17	17	15	14	13	13	12	13	13	15	15	15	22
Monthly Average of Children Per Care Coordinator	37	38	35	32	30	30	26	27	26	31	32	32	49
Average length of Participation	101	111	116	132	138	130	123	115	114	109	130	116	123
Percentage of Home Visits Completed Timely for the Month*	80%	84%	97%	100%	87%	89%	100%	100%	100%*	88%	86%	96%	97%
Percentage Approved Ongoing Family Functioning Assessment	43%	49%	85%	77%	86%	68%	no data	82%	93%	65%	68%	52%	44%
Percent of Families with a Transition Plan	89%	50%	96%	93%	100%	60%	33%	100%	100%	100%	100%	Unkn	unkn

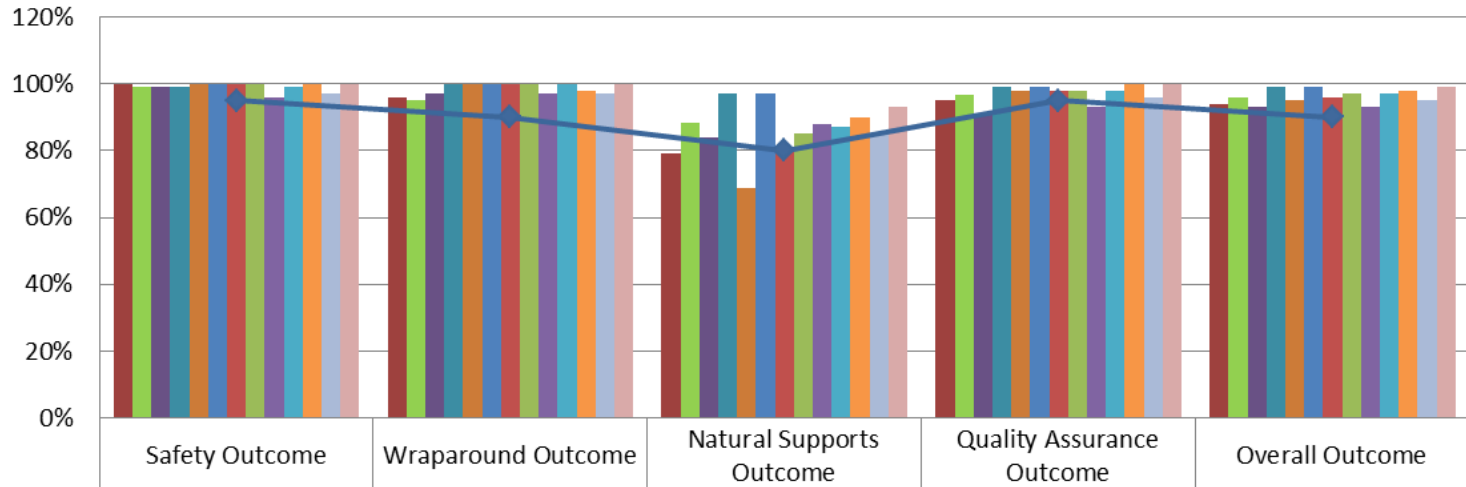
Child Welfare Outcomes 2016-17



	Safety Outcome	Wraparound Outcome	Natural Supports Outcome	Quality Assurance Outcome	Overall Outcome
June 2016	91%	97%	80%	92%	90%
July 2016	98%	97%	90%	97%	96%
August 2016	98%	92%	92%	88%	92%
September 2016	97%	98%	84%	92%	93%
October 2016	99%	96%	78%	95%	93%
November 2016	96%	98%	88%	92%	93%
December 2016	100%	100%	85%	98%	97%
January 2017	98%	100%	87%	96%	96%
February 2017	100%	100%	90%	100%	98%
March 2017	99%	100%	88%	98%	97%
April 2017	98%	90%	79%	96%	94%
May 2017	99%	100%	90%	99%	98%
June 2017	99%	100%	75%	95%	93%
Target	95%	90%	80%	95%	90%

Community Services Data	June 2016	July 2016	August 2016	September 2016	October 2016	November 2016	December 2016	January 2017	February 2017	March 2017	April 2017	May 2017	June 2017
Number of Families Served in Post Adoption (in state)	64	62	64	66	70	66	66	66	65	66	67	67	64
Number of Children Served in Post Adoption (in state)	84	81	81	83	88	82	81	83	82	83	83	82	80
Number of Families Served by Head Start Coordinator	25	20	15	21	30	31	34	36	38	31	33	32	29
Number of Children Served by Head Start Coordinator	59	45	31	54	80	86	93	97	101	83	88	83	70
Number of Children Served by Safety Management Services Team	47	45	46	39	44	44	65	69	74	69	53	64	64
Number of Cases Served by Safety Management Services Team	19	20	21	18	21	23	26	25	27	25	21	23	24
Number of Children Served by Mobile Response Team	40	42	29	47	43	35	40	55	56	44	32	42	32
Number of Cribs for Kids Pack and Plays Distributed	23	29	24	38	27	39	14	22	18	33	26	22	19

Community Services Outcomes 2016-17



	Safety Outcome	Wraparound Outcome	Natural Supports Outcome	Quality Assurance Outcome	Overall Outcome
June 2016	100%	96%	79%	95%	94%
July 2016	99%	95%	88%	97%	96%
August 2016	99%	97%	84%	91%	93%
September 2016	99%	100%	97%	99%	99%
October 2016	100%	100%	69%	98%	95%
November 2016	100%	100%	97%	99%	99%
December 2016	100%	100%	81%	98%	96%
January 2017	100%	100%	85%	98%	97%
February 2017	96%	97%	88%	93%	93%
March 2017	99%	100%	87%	98%	97%
April 2017	100%	98%	90%	100%	98%
May 2017	97%	97%	85%	96%	95%
June 2017	100%	100%	93%	100%	99%
◆ Target	95%	90%	80%	95%	90%