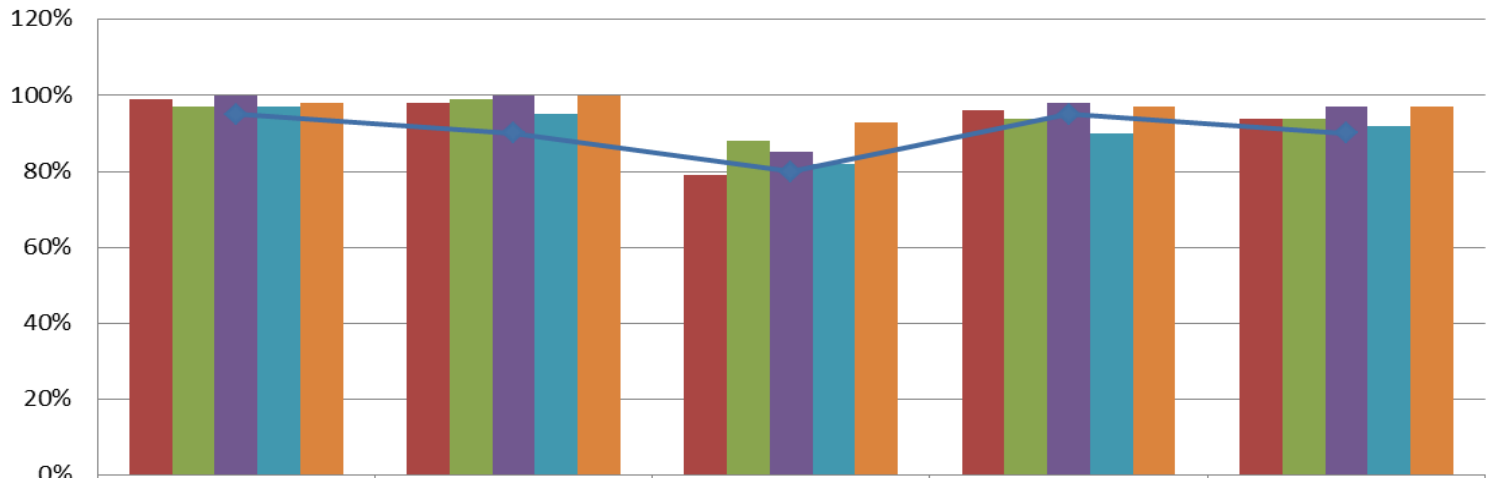




## January 2018 Data Report

<b>Brevard C.A.R.E.S. Data</b>	January 2017	July 2017	August 2017	September 2017	October 2017	November 2017	December 2017	January 2018
Total Number of Children Served by the Agency	768	896	884	815	786	799	834	847
Total Number of Families Served by the Agency	346	388	389	365	353	353	365	371
Total Number of Client Complaints & Trackers		0	0	0	0	0	0	0
Total Number of Critical Incident Reports		0	1	0	0	0	0	1
Percent of Satisfied Families Successfully Completing (*not final FTC Survey)		100%*	100%	100%	100%	100%	100%	100%

### CARES Outcomes 2017-2018

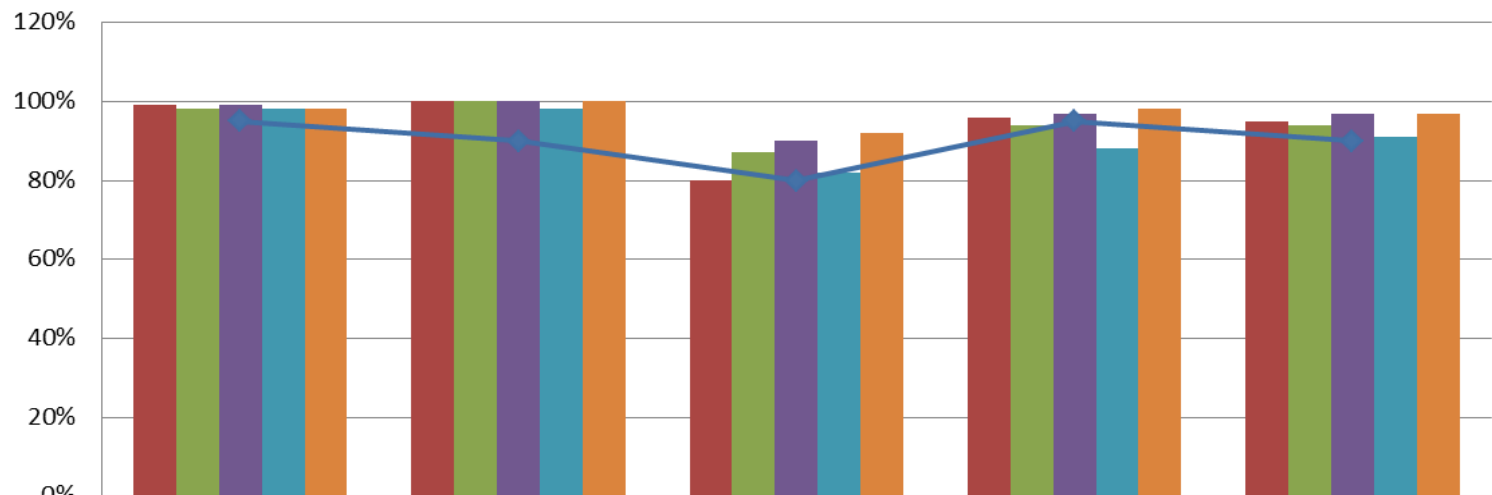


	Safety Outcome	Wraparound Outcome	Natural Supports Outcome	Quality Assurance Outcome	Overall Outcome
October 2016	99%	98%	79%	96%	94%
November 2016	97%	99%	88%	94%	94%
December 2016	100%	100%	85%	98%	97%
Qrt 1 2017-18	97%	95%	82%	90%	92%
Qrt 2 2017-18	98%	100%	93%	97%	97%
Target	95%	90%	80%	95%	90%



<b>C.A.R.E.S. Program Caseload Data</b>	January 2017	July 2017	August 2017	September 2017	October 2017	November 2017	December 2017	January 2018
Monthly Average Per Care Coordinator (# of Families)	28	37	37	34	31	35	36	36
Monthly Average Per Family Partner (# of Families)	4	10	8	8	6	5	4	5
Average length of Participation	157	140	131	130	141	144	150	131
Percent of Families with a Transition Plan	75%	100%	100%	100%	100%	100%	92%	80%

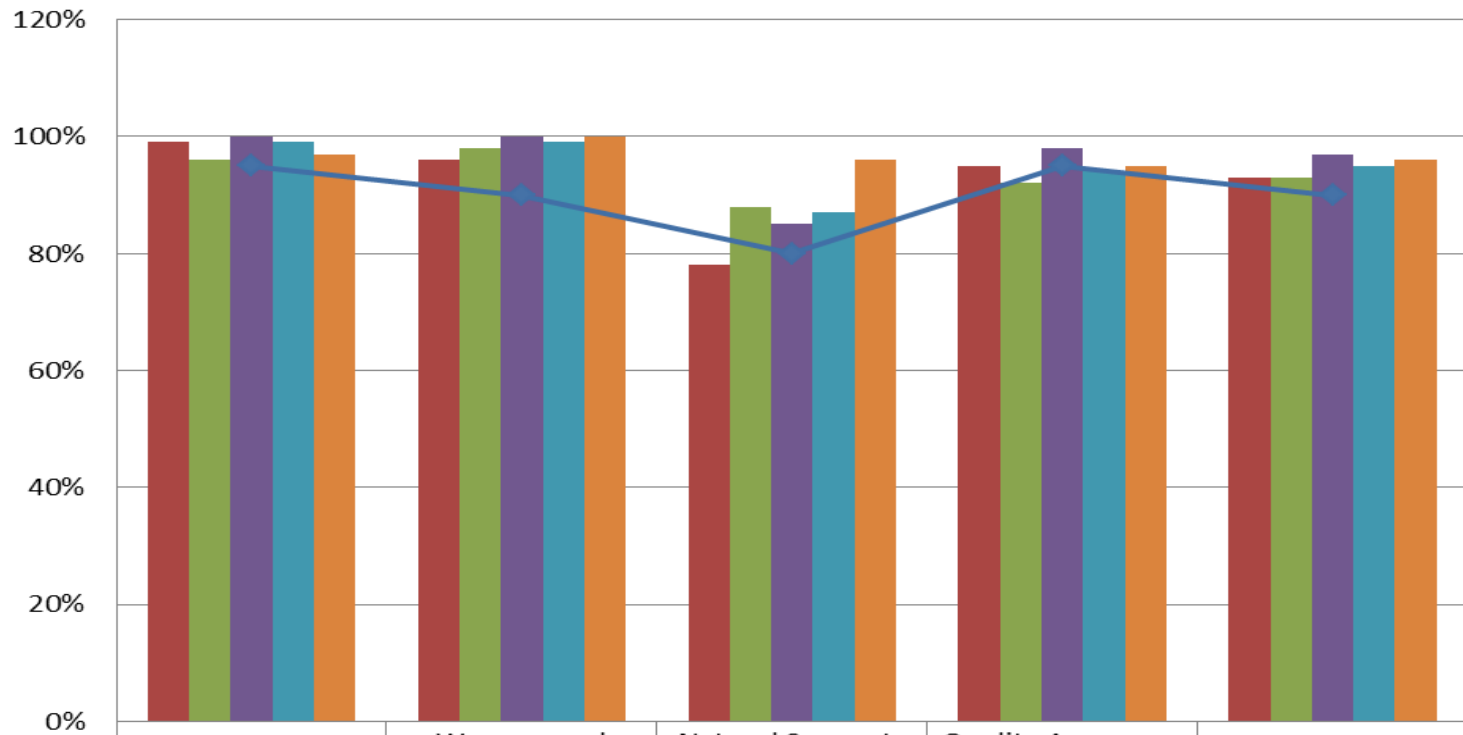
## Prevention Outcomes 2017-2018



	Safety Outcome	Wraparound Outcome	Natural Supports Outcome	Quality Assurance Outcome	Overall Outcome
October 2016	99%	100%	80%	96%	95%
November 2016	98%	100%	87%	94%	94%
December 2016	99%	100%	90%	97%	97%
Qrt 1 2017-18	98%	98%	82%	88%	91%
Qrt 2 2017-18	98%	100%	92%	98%	97%
Target	95%	90%	80%	95%	90%

<b>NJIHS Data</b>	January 2017	July 2017	August 2017	September 2017	October 2017	November 2017	December 2017	January 2018
Number of new NJIHS cases	15	13	18	15	12	15	11	10
Number of new NJIHS children	26	32	36	31	22	27	27	21
Number of Families Served in Non Judicial In Home Services	76	85	94	103	105	102	103	106
Number of Children Served in Non Judicial In Home Services	161	199	220	246	241	233	234	244
Percent of Children Seen		99%	100%	99%	99%		100	99.5%
Number of Removals During Open Services		0	3	0	5	2	1	3
Percent of Family Teams with 40% Informal and Community Supports		QRT	QRT	100%	QRT		50%	33%
<b>NJIHS Case Closure Reasons</b>	January 2017	July 2017	August 2017	September 2017	October 2017	November 2017	December 2017	January 2018
Total number of FSFN closures	6	5	1	7	7	0	10	9
Case Supervision Completed/ Outcomes Achieved	6	2	1	1	5	0	5	5
Service Provision Completed	0	2	0	3	1	0	4	0
Family Requests Services Close	0	0	0	0	0	0	1	1
Other	0	1	0	3	1	0		3
Percent of Successfully Closed Cases without Verified Abuse 6 months		93%	95%	94%	94%	NA	95%	
Percent of Satisfied Families Successfully Completing (*not final FTC Survey)		100%*	100%*	100%	100%	100%	100%	100%
<b>NJIHS Caseload Data</b>	January 2017	July 2017	August 2017	September 2017	October 2017	November 2017	December 2017	January 2018
Monthly Average of Families Per Care Coordinator	13	28	31	17	21	17	17	18
Monthly Average of Children Per Care Coordinator	27	66	73	41	49	39	39	41
Average length of Participation	115	127	124	153	156	165	182	203
Percentage of Home Visits Completed Timely for the Month*	100%	99%	100%	99%	99%	100%	100%	99.5%
Percentage Approved Ongoing Family Functioning Assessment	82%	41%	34%	44%	58%	51%	66%	61%
Percent of Families with a Transition Plan	100%	60%	100%	75%	71%	n/a	50%	78%

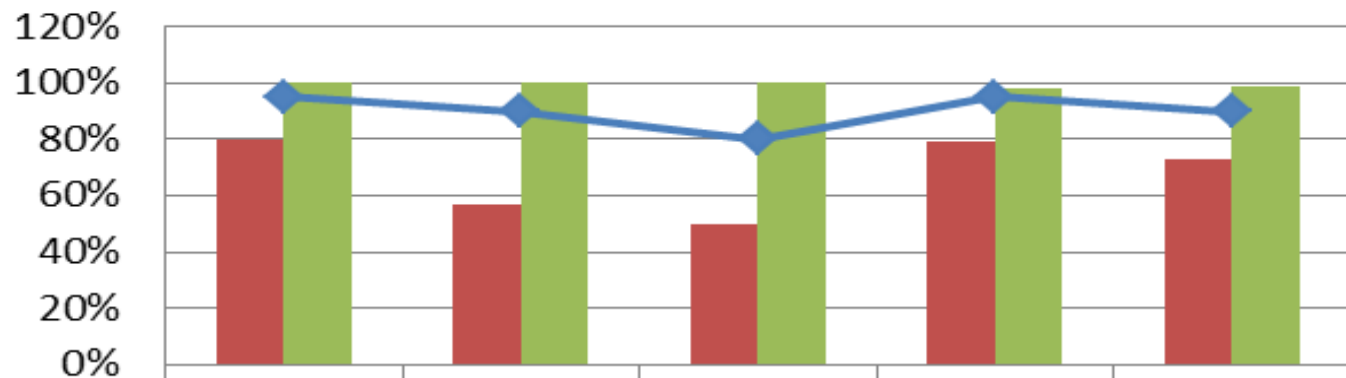
## NJHS Outcomes 2017-18



	Safety Outcome	Wraparound Outcome	Natural Supports Outcome	Quality Assurance Outcome	Overall Outcome
October 2016	99%	96%	78%	95%	93%
November 2016	96%	98%	88%	92%	93%
December 2016	100%	100%	85%	98%	97%
Qrt 1 2017-18	99%	99%	87%	94%	95%
Qrt 2 2017-18	97%	100%	96%	95%	96%
Target	95%	90%	80%	95%	90%

Post Adoption Services Data	January 2017	July 2017	August 2017	September 2017	October 2017	November 2017	December 2017	January 2018
Number of New Children Served in Post Adoption (in state)		0	0	0	1	1	0	0
Number of Families Served in Post Adoption (in state)	66	64	61	56	55	47	48	46
Number of Children Served in Post Adoption (in state)	83	80	77	73	73	61	67	65
Number of Families Who Participated in Support Group		0	10	0	3	4	3	3
Percent of Annual Contacts Completed		NA	100	100	100	100	100	100
Wraparound Fidelity		100%	n/a	n/a	n/a	n/a	n/a	n/a
Percent of Satisfied Families		100%	NA	n/a	100%*	n/a	n/a	n/a

## Post Adoption Outcomes 2017-18



	Safety Outcome	Wraparound Outcome	Natural Supports Outcome	Quality Assurance Outcome	Overall Outcome
■ Qrt 1 2017-18	80%	57%	50%	79%	73%
■ Qrt 2 2017-18	100%	100%	100%	98%	99%
◆ Target	95%	90%	80%	95%	90%

<b>Head Start Services Data</b>	January 2017	July 2017	August 2017	September 2017	October 2017	November 2017	December 2017	January 2018
Number of New Children Served by Head Start Coordinator		1	10	5	10	3	5	1
Number of Children Served by Head Start Coordinator	36	64	69	47	5	46	61	64
Number of Families Served by Head Start Coordinator	97	28	29	20	23	21	26	28
Total number of FSFN closures		3	11	4	5	0	0	0
Percent of Satisfied Families Successfully Completing (*not final FTC Survey)		NA	100%	100%*	100%*	100%*	100*	100*

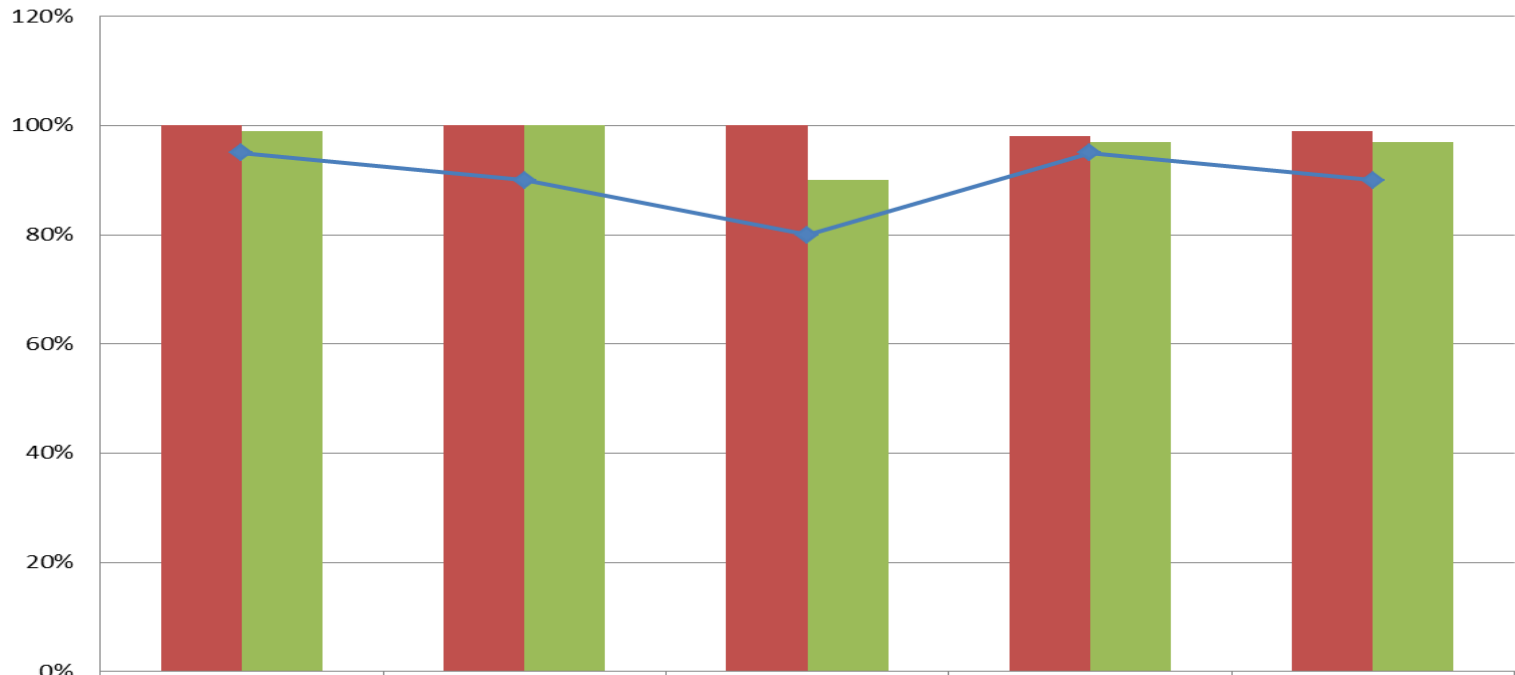
<b>Mobile Response Team Data</b>	January 2017	July 2017	August 2017	September 2017	October 2017	November 2017	December 2017	January 2018
Number of Calls Received		32	43	22	33	59	33	34
Number of Telephonic Crisis Response Assessments		25	19	14	20	21	16	28
Number of Onsite Crisis Response Assessments		15	15	9	13	7	10	6
Number of Post Assessment Staffings Attended (aftercare followup)		20	8	0	0	1	0	1
Number of Children Served by Mobile Response Team	55	53	15	52	61	27	38	41
Percent of Children with Placement Disruption		0	0%	0%	0	0	0	0
Percent of Calls with Timely Onsite Crisis Response	100%	100%	100%	100%	100%	100%	100%	100%

<b>Targeted Case Management Data</b>	January 2017	July 2017	August 2017	September 2017	October 2017	November 2017	December 2016	January 2018
Number of New TCM cases	0	5	0	0	0	0	1	0
Number of New TCM children	0	4	0	0	0	0	0	0
Number of New TCM adults	0	1	0	0	0	0	1	0
Number of Children Served by TCM	0	4	2	2	2	2	2	2
Number of Adults Served by TCM	0	1	1	1	1	1	2	1
Number of Families Served in Prevention	0	5	3	3	3	3	4	3
Monthly Average of Children Per TCM	0	4	3	3	3	3	3	3
Monthly Average of Adults Per TCM	0	1	1	1	1	1	2	2
Average length of Participation	0		NA	NA	NA	NA	5 month	5



Safety Management Services Data	January 2017	July 2017	August 2017	September 2017	October 2017	November 2017	December 2017	January 2018
Number of New Children Served by Safety Management Services		7	14	11	8	29	9	21
Number of New Families Served by Safety Management Services		4	6	5	5	9	4	9
Number of Cases Served by Safety Management Services Team	25	10	17	15	20	20	16	25
Number of Children Removed During Services		1	0	2	5	3	0	0
Number of Children Removed within 90 days of Closure			4	0	0	0	0	0
Percent of Satisfied Families		100%	NA	NA	100%	100%	100*	100%

### Safety Management Services Outcomes 2017-18



	Safety Outcome	Wraparound Outcome	Natural Supports Outcome	Quality Assurance Outcome	Overall Outcome
Qrt 1 2017-18	100%	100%	100%	98%	99%
Qrt 2 2017-18	99%	100%	90%	97%	97%
Target	95%	90%	80%	95%	90%

<b>Homelessness Data</b>	January 2017	July 2017	August 2017	September 2017	October 2017	November 2017	December 2017	January 2018
Number of New Homeless Prevention cases (HMIS Data)		5	6	3	8	3	5	1
Number of New Homeless Prevention children (HMIS Data)		12	12	10	26	10	12	4
Total Homeless Prevention cases (HMIS Data)		5	8	4	8	3	5	2
Total Homeless Prevention children (HMIS Data)		12	15	12	26	10	12	5
Number of New Homeless cases (HMIS Data)		4	2	2	3	6	2	3
Number of New Homeless children (HMIS Data)		10	9	8	13	15	5	6
Total Homeless cases (HMIS Data)		4	5	2	3	8	8	9
Total Homeless children (HMIS Data)		10	17	12	13	22	20	13
Percent of Families Rehoused		NA	0%	0	0	0	0	100%
Percent of Children Rehoused		NA	0%	0	0	0	0	100%
Total Number of Children Served under HfH		NA	12	17	20	14	14	11
Total Number of Families Served under HfH		NA	5	7	8	6	6	5
<b>Cribs for Kids Data</b>	January 2017	July 2017	August 2017	September 2017	October 2017	November 2017	December 2017	January 2018
Number of Safe Sleep Classes		3	5	3	12	5	5	5
Number of Cribs for Kids Pack and Plays Distributed	14	16	23	22	27	21	9	13
Number of Pack and Plays Distributed as Tangible Resource	18	11	11	5	3	7	8	13